

MOMOLINE®

Technical furniture for laboratories



LINEA ACCIAIO
stainless steel line



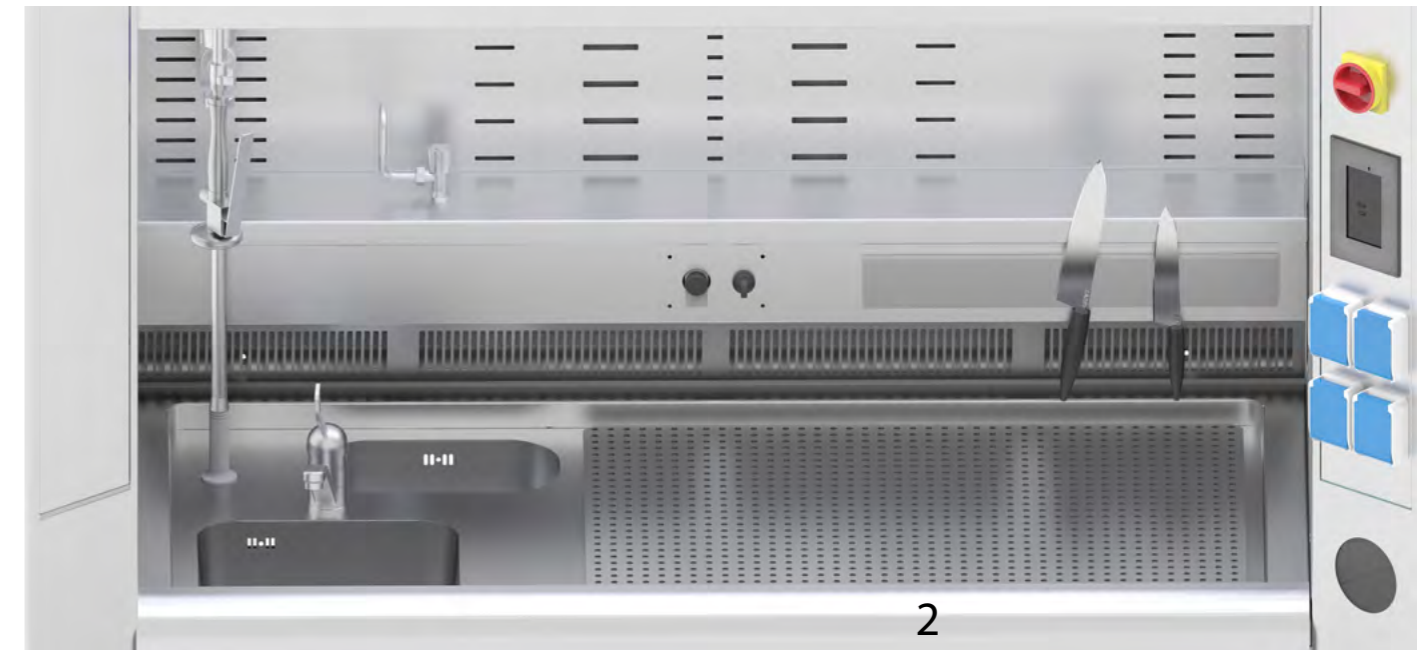
BELAIR 56 Hysto

profondita' piano
worktop depth 750/800 mm

profondita' totale
total depth 950/1100 mm

postazioni di lavoro
workstations 1

codice code	larghezza piano worktop width	larghezza esterna external width
K90-H-BELAIR56	900	1200
K120-H-BELAIR56	1200	1500
K150-H-BELAIR56	1500	1800
K180-H-BELAIR56	1800	2200
K220-H-BELAIR56	2200	2400
K240-H-BELAIR56	2400	2700



BELAIR 56 Hysto

Plus



profondita' piano
worktop depth 750/800 mm

profondita' totale
total depth 950/1100 mm

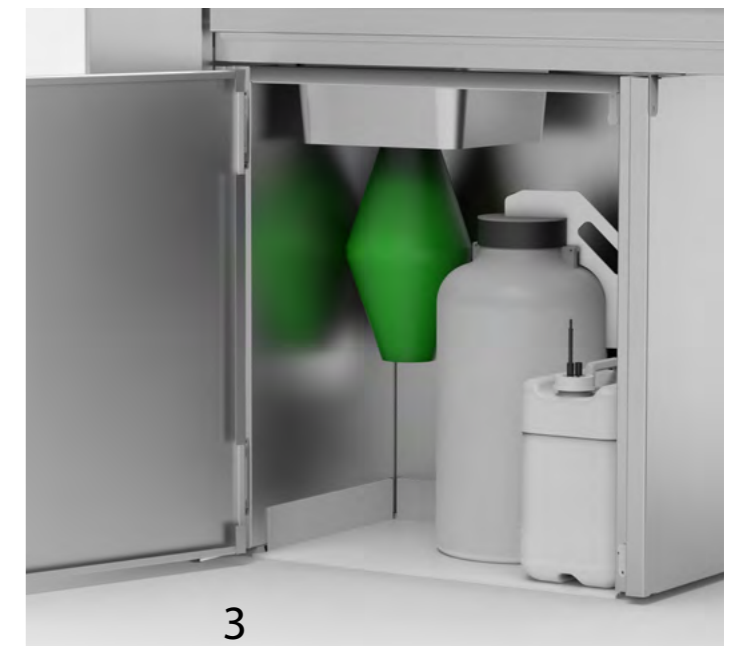
postazioni di lavoro
workstations 2

codice code	larghezza piano worktop width	larghezza esterna external width
K180-HP-BELAIR56	1800	2200
K250-HP-BELAIR56	2500	2800

1 Particolare della zona taglio realizzata in resina con aspirazione a livello del piano di lavoro.
Detail of cutting area realized in polymeric resin with exhaust facility at worktop level.

2 Particolare della zona taglio con piano forellinato per la raccolta dei liquidi ed aspirazione dal basso.
Detail of cutting area and exhaust facility from bottom through the worktop, with waste collection.

3 Particolare del vano aspirato e filtrato per l'alloggiamento delle taniche di raccolta ed erogazione formalina.
Detail of exhaust filtered compartment with waste/supply formaline canisters.

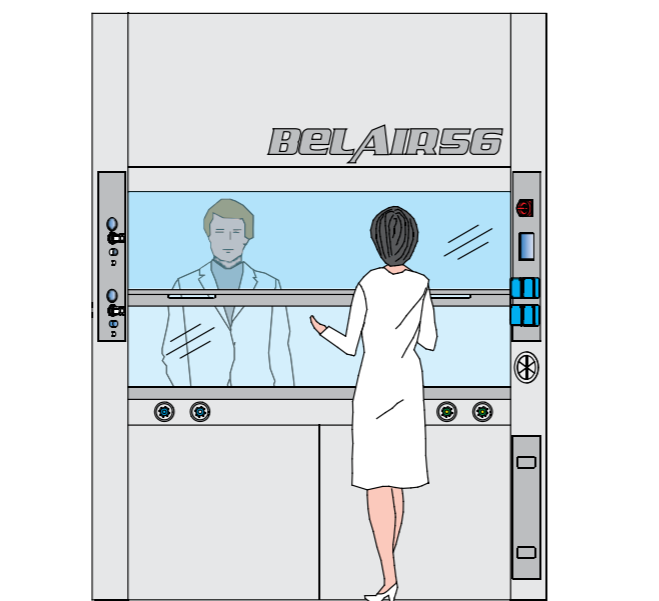




BELAIR56 Hysto

Double

cappa bifronte
double sided fume hood



BELAIR56 Hysto

Walk-in

profondita' totale
total depth 950/1100 mm

postazioni di lavoro
workstations 1

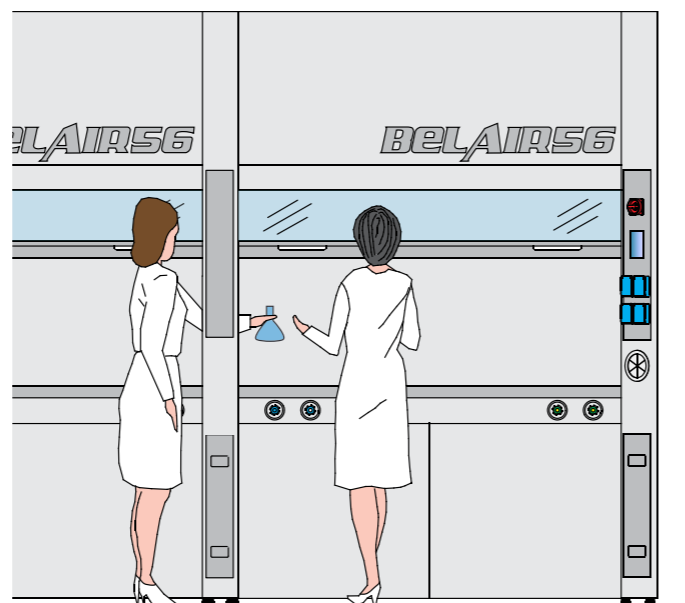
codice code	larghezza utile employable width	larghezza esterna external width
K90-HW-BELAIR56	900	1200
K120-HW-BELAIR56	1200	1500
K150-HW-BELAIR56	1500	1800
K180-HW-BELAIR56	1800	2200
K220-HW-BELAIR56	2200	2400
K240-HW-BELAIR56	2400	2700



BELAIR56 Hysto

Pass through

spalla centrale con finestra di comunicazione
central element with window





BELAIR 56 Hysto

Height adjustable

altezza piano di lavoro regolabile
worktop with adjustable height



profondita' piano
worktop depth 750/800 mm

profondita' totale
total depth 950/1100 mm

postazioni di lavoro
workstations 1

codice code	lunghezza piano worktop width	lunghezza esterna external width
K90-HM-BELAIR56	900	1200
K120-HM-BELAIR56	1200	1500
K150-HM-BELAIR56	1500	1800
K180-HM-BELAIR56	1800	2200
K220-HM-BELAIR56	2200	2400
K240-HM-BELAIR56	2400	2700



chemiGUARD

Hysto

stoccaggio campioni
samples storage

codice code	l x p x h l x d x h
CMG-H-120-BASE	1200x700x2000
CMG-H-120-ECO	1200x700x2000
CMG-H-120-PLUS	1200x700x2000
CMG-H-150-BASE	1500x700x2000
CMG-H-150-ECO	1500x700x2000
CMG-H-150-PLUS	1500x700x2000



doppia porta scorrevole per passaggio campioni
double sliding doors for samples transfer



Workstation

banco aspirato
aspirated bench



codice code	larghezza piano worktop width	l x p x h l x d x h
BAS-120	1100	1200x900x900
BAS-150	1400	1500x900x900
BAS-180	1700	1800x900x900

Workstation

banco aspirato
aspirated bench



codice code	larghezza piano worktop width	l x p x h l x d x h
BAS-120-A	1100	1200x900x900
BAS-150-A	1400	1500x900x900
BAS-180-A	1700	1800x900x900





Xlab

banco lavello
washing-unit bench

vasca ed ante a battente
sink and swing door

codice code	l x p x h l x d x h	vasca sink
XLAB-100.01	700x600x900	300x350x200



Xlab

banco da lavoro
work bench

cassettiera centrale e ante a battente
drawers and swing doors

codice code	l x p x h l x d x h	vasca sink
XLAB-100.07	1200x750x900	500x500x150
XLAB-100.08	1500x750x900	500x500x150
XLAB-100.09	1800x750x900	500x500x150



Xlab

banco lavello
washing-unit bench

vasca e tre ante a battente
sink and three swing doors

codice code	l x p x h l x d x h	vasca sink
XLAB-100.02	1200x600x900	300x300x200
XLAB-100.03	1500x600x900	300x300x200
XLAB-100.04	1800x600x900	300x300x200



Xlab

banco lavello
washing-unit bench

vasca e ante scorrevoli, sistema di scarico controllato dei rifiuti speciali
sink and sliding doors, with special waste control system

codice code	l x p x h l x d x h	vasca sink
XLAB-100.10	1200x600x900	300x300x200
XLAB-100.11	1500x600x900	300x300x200
XLAB-100.12	1800x600x900	300x300x200



Xlab

banco lavello
washing-unit bench

doppia vasca e ante a battente
double sink with swing doors

codice code	l x p x h l x d x h	vasca sink
XLAB-100.05	1200x600x900	400x400x250
XLAB-100.05	1500x600x900	400x400x250



Xlab

banco da lavoro
work bench

vano scorrevole per stoccaggio bidoni porta-rifiuti
sliding closet for storage of waste bins

codice code	l x p x h l x d x h
XLAB-100.13	700x600x900



Xray

armadio sottocappa per stoccaggio rifiuti
underbench cabinet for waste storage

codice code	l x p x h l x d x h
UK-SC	675x520x750



Xray

carrello
trolley

codice code	l x p x h l x d x h
RP-200.03	900x500x900
RP-200.04	900x500x900



Xray

portarifiuti schermato con lastra di piombo
waste tray shielded by a lead sheet

codice code	l x p x h l x d x h
RP-200.01	400x400x750



Xray

banco lavello schermato con lastra di piombo
washing unit bench shielded by a lead sheet

codice code	l x p x h l x d x h	vasca sink
RP-200.05	600x600x900	350x350x200



Xray

visore schermato con vetro anti-x e lastra di piombo
screen shielded by anti-x-ray glass and a lead sheet

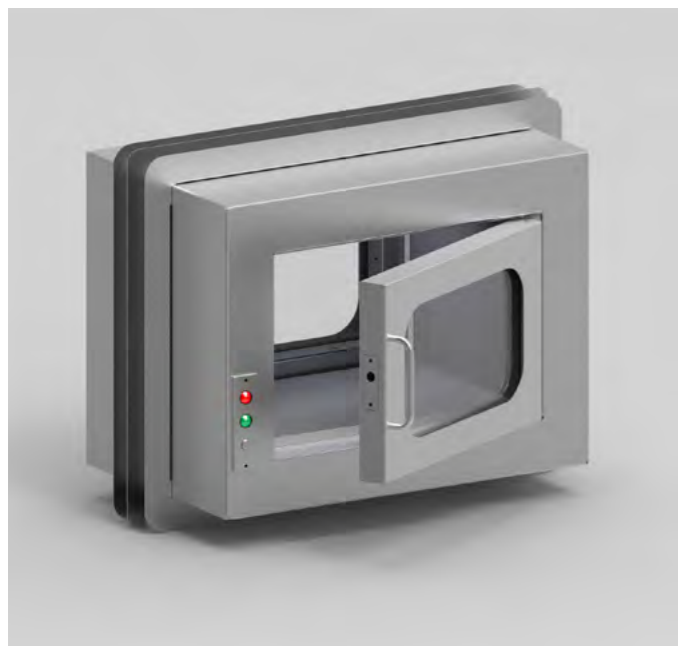
codice code	l x p x h l x d x h
RP-200.02	400x400x600



Xray

portarifiuti schermato con lastra di piombo
waste tray shielded by a lead sheet

codice code	l x p x h l x d x h
RP-200.06	1800x500x900



Pass-box

Per montaggio a parete. Interblocco porte elettronico
For wall fitting. Electronic doors lockage

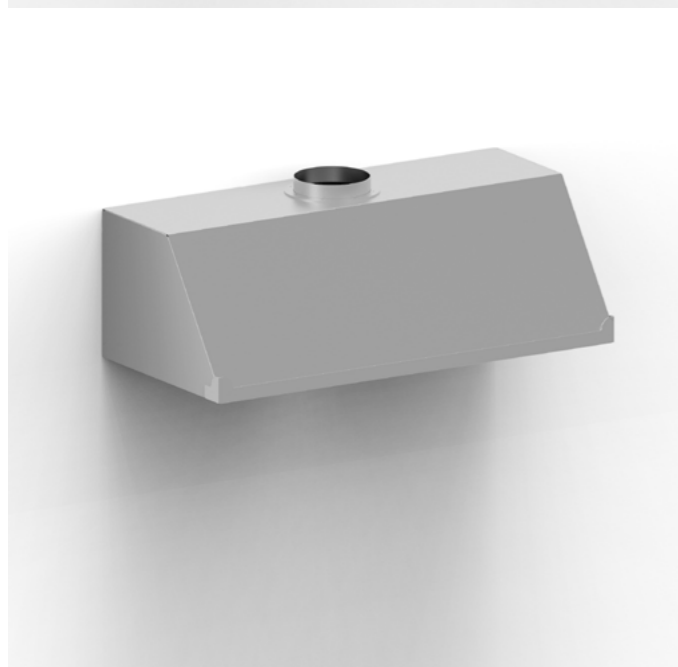
codice
code
RP-200.09



Local extractor

per aspirazione fumi e vapori caldi e corrosivi
for aspiration of hot and corrosive fumes

codice code	l x p x h l x d x h
KP-200.08	300x350x350



Canopy hood

per aspirazione fumi e vapori caldi e corrosivi
for aspiration of hot and corrosive fumes

codice code	l x p x h l x d x h
RP-200.10	1200x700x500
RP-200.11	1500x700x500
RP-200.12	1800x700x500



MOMOLINE®

Technical furniture for laboratories



Fabbrica Italiana



Italian Factory

MOMOLINE s.r.l.

Via Circumvallazione Esterna, 12 - 80025
Casandrino - Napoli - Italy

Tel: +39 (0)81 5053714 - Fax: +39 (0)81 5052783
www.momoline.it - info@momoline.it